

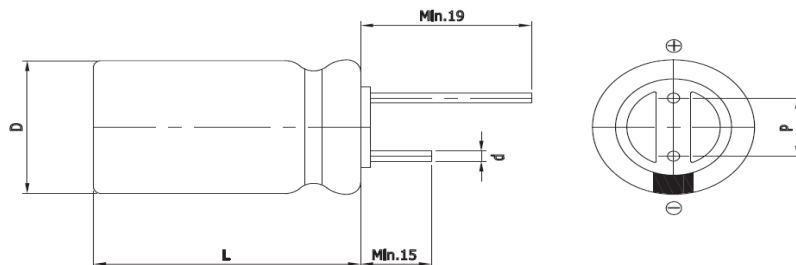
## Features

### EDLC (Electric Double Layer Capacitor)

- High Power Density
- Over 500,000 cycle life (semi-permanent)
- Higher energy density compared with 2.7V caps
- RoHS compliant
- Long-term reliability improved at high temperature and humidity



## Drawing



D (Φ)	10.0 +1.0 Max
L (mm)	20.0 ±1.5
d (Φ)	0.6 ±0.1
P (mm)	5.0 ±0.5

## Specification

Item	Characteristics	
Product series	EDLC	
Rated Voltage (V <sub>R</sub> )	3.0V	
Operating Temperature	-40 ~ +65°C	
Capacitance Tolerance	-10 ~ +30%	
High Temperature Load Life	After 1,000 hours at V <sub>R</sub> loaded under +65°C, capacitors meet the following criteria.	
	Capacitance Change	≤ 30% of initial value
	ESR	≤ 2 times of specified value
Cycle Life Characteristics	Cycle	Over 500,000
	ΔC	≤ 30% of initial value
	ESR	≤ 2 times of specified value
	Method	Cycle of Charge/discharge from V <sub>R</sub> to 1/2V <sub>R</sub>
Shelf Life	2 Years No Electrical Charge, Temperature below 70°C (ΔC : ≤ 10% of initial value / ΔESR : ≤ 50% of specified value)	

Part Number	Rated Voltage (V)	Capacitance (F)	ESR (mΩ)		Max. Current (A)	Leakage Current (mA, 72hr)	Size (mm)
			AC(1kHz)	DC			D x L
WEC 3R0 505 QG	3.0	5	80	120	4.5	0.015	10 x 20

\* Max. Current : 1 sec. discharge to 1/2V<sub>R</sub>

Version 1.2 2019.02.21.